

The First United Methodist In the First Place (USPS692-190) is published weekly except one week in July and one week in December by the First United Methodist Church, 723 Center Street, Little Rock, Arkansas 72201-4317. Editor, Michael Mattox; Managing editor, Deni Clark; Periodicals postage paid at Little Rock, Arkansas. www.fumclr.org  
 POSTMASTER: Send address changes to FUMC In The First Place, 723 Center Street, Little Rock, Arkansas 72201-4317

PERIODICALS  
 POSTAGE PAID  
 LITTLE ROCK,  
 AR

# In The First Place

## Passionate Living

*"A man who won't die for something is not fit to live."  
 "Faith is taking the first step even when you don't see the whole staircase."  
 -The Rev. Dr. Martin Luther King, Jr.*

These are among two of my favorite quotes by Dr. Martin Luther King, Jr. Perhaps the greatest lesson I've gained from examination and admiration of the life of this great prophet of our time is that living a life you are passionate about is the best and only way to live. As someone who searched most of her life to discover and claim her passion, this resonates with me on a deeply personal level. Uncovering and tapping into the passions we are called to live out require steps of faith in which you truly cannot see the entire staircase ahead. A passionate life journey revolves around knowing the One who guides our steps and waits for us at the top.

Next week, we celebrate the legacy of a great human whose passionate life work and devotion was to join people of different races and backgrounds for a common good. Dr. Martin Luther King, Jr.'s concept of "somebodiness" symbolized the celebration of human worth for all people. His work for equality gave people hope, respect and a sense of dignity. Dr. King's philosophy of nonviolent direct action offered the opportunity to change the conscience of our country and reorder its priorities.

On Sunday, January 17, in the United Methodist Church we celebrate Human Relations Day which is always recognized on the Sunday before the national celebration of Dr. King's birthday. The purpose of Human Relations Day is a call to "the Church to recognize the right of all God's children in realizing their potential as human beings in relationship with each other.

First Church will celebrate this day with a special offering and a pulpit exchange with Wesley Chapel United Methodist Church. Our Senior Pastor, Rev. Mattox, has been invited to preach there and Rev. Betty J. Scull, associate pastor at Wesley Chapel, will preach in our 11:00 service. Rev. Scull is a trailblazer whose life and ministry exemplify passionate living. She holds both a Bachelor of Arts Degree in English and a Master of Public Administration Degree. She is currently a graduate student at UALR in the Professional and Technical Writing Program and the Course of Study School for part-time local pastors located at Hendrix College and affiliated with Perkins Seminary. Rev. Scull retired from the State of Arkansas after 35 years of service in 2008 where she specialized in human resources, planning and development. As a local pastor in the UM church, she served as pastor of Capitol View UMC for four years and as associate pastor at Quapaw Quarter UMC for six years before going to Wesley Chapel.

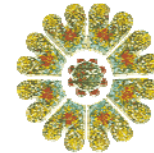
We are indeed passionate about Human Relations day and the reminder that we are called to promote unity and love among all God's people. Please join us in this effort through your participation and worship. Please be in prayer for these wonderful pastors, our own Rev. Mattox and Rev. Scull, as they demonstrate the essence of this special day.

Dr. King remained faithful and passionate about his mission even and especially in the face of adversity. May we follow his example of passionate living in the way God calls us to work together in the world.

What is your passion?!

*Grace and Peace,  
 Mary Jane Cole*

## First United Methodist Church



Downtown for Good

### Second Sunday after the Epiphany January 17, 2010

First Light in the Chapel - 8:30  
 First Word in the Gym - 8:55  
 (Contemporary Service)  
 First Tradition in the Sanctuary - 11:00

**Sermon 8:30/8:55**  
**"You are Cordially Invited to a Wine-tasting in Cana, Please r.s.v.p."**  
**Rev. Dr. Michael Mattox**

**Sermon 11:00**  
**"But What Does God Require?"**  
**Rev. Betty Scull**

**Weekly Bible Readings**  
 Isaiah 62:1-5  
 Psalm 36:5-10  
 I Corinthians 12:1-11  
 John 2:1-11

First United Methodist Church  
 723 Center Street  
 Little Rock, Arkansas 72201  
 (501) 372-2256  
 Website: www.fumclr.org  
 Volume 34 Issue 2  
 January 17, 2010

## Church Calendar

### SUNDAY, January 17, 2010

- 8:00 a.m. Pancake Breakfast (Fellowship Hall)
- 8:15 a.m. First Cup Café (Coffee only)
- 8:30 a.m. First Light in the Chapel
- 8:55 a.m. First Word, Contemporary (Gym)
- 8:55 a.m. Glory Singers (Choir Room)
- 8:55 a.m. Quarter Notes (Music Room)
- 9:00 a.m. Telephone Sunday School Class
- 9:45 a.m. Sunday School
- 10:30 a.m. Quiet Meditation (Chapel)
- 11:00 a.m. First Tradition in the Sanctuary
- 3:00 p.m. Sr. High Girls' Basketball Practice (Gym)
- 3:30 p.m. Youth Band Practice (Youth Lounge)
- 4:30 p.m. VOICES (Seniors Only) (Choir Room)
- 5:30 p.m. First Youth (Youth Lounge)

### MONDAY, January 18, 2010

*The Church office is closed for Martin L. King Jr. Holiday.*  
 6:00 p.m. Girls' Club Basketball Practice (Gym)

### TUESDAY, January 19, 2010

- 7:00 a.m. Men's Bible Study (Youth Lounge)
- 8:30 a.m. L.I.F.T.
- 9:00 a.m. Staff Meeting (Friendship Classroom)
- 10:00 a.m. FUMC Library Committee Meeting
- 4:15 p.m. 723 Band Rehearsal (Gym)
- 5:45 p.m. Jr. High Boys' Basketball (Gym)
- 6:30 p.m. Girl Scouts
- 6:30 p.m. Sarah Circle
- 7:15 p.m. Sr. High Boys' Basketball (Gym)

### WEDNESDAY, January 20, 2010

- 8:30 a.m. L.I.F.T.
- 9:00 a.m. CDC Chapel (Chapel)
- 11:30 a.m. Weight Watchers (Room 259)
- 12:00 p.m. UIC (Youth Lounge)
- 4:30 p.m. Finance Executive Committee (Michael's office)
- 5:00 p.m. Finance Committee (Choate)
- 5:00 p.m. Sanctuary Bells (Room 302)
- 6:00 p.m. Boys' Club Basketball Practice (Gym)
- 6:00 p.m. Church Board (Fellowship Hall)
- 7:00 p.m. Chancel Choir Practice (Choir Room)

### THURSDAY, January 21, 2010

- 8:30 a.m. L.I.F.T.
- 10:30 a.m. Companions in Christ (Study)
- 12:00 p.m. Pastor's Bible Study (Friendship Class)
- 6:30 p.m. First Word Band Practice (Gym)
- 7:00 p.m. The Ensemble

## In Memory of

### Charlie Herrell

- By: Patsy Frost  
 Sarah Spencer and Fred Oswald  
 Bob and Lee Cress  
 Mary Ann Lee  
 Kelsy and Marcia Caplinger  
 Craig and Nancy Wood  
 Betty Ann Bullard  
 Donna Jackson  
 Thomas and Marguerite Woods  
 Sally Keller Jackson  
 Amy Grant  
 Irma Jewell (Communion Fund)

## In Honor of

### Craig and Nancy Wood

By: Don and Helen Williams

### Richard Butler, Jr.

By: Patsy Frost

**Pastor on Call - January 17-23**  
**If you need a pastor after regular office hours,**  
**Rev. Michael Mattox is on call.**  
**You may reach him on his cell phone at 231-5824.**

## What's Happening at First Church



### Pancake Breakfast This Sunday

January 17  
8-10 a.m.  
Fellowship Hall

Donations go to the assistance  
dog fund for Charles Zook.

The First Cup Café will be open for coffee only this Sunday because of the Pancake Breakfast. Spend time in the café each Sunday and meet someone new or catch up with an old friend over a cup of tea, coffee, juice, milk, or hot chocolate. Enjoy a Danish, donut, muffin, bagel, ham and swiss or sausage and cheese croissant.



Want to help in the café? Speak with Greg Hubbard, who is there almost every Sunday!

### District Teacher Training

If you are a new teacher or shepherd (or want to be), you won't want to miss this opportunity for increasing your effectiveness in the classroom. Veteran teachers are also encouraged to join us as we learn new skills for guiding, instructing and modifying behavior. First UMC Jacksonville member Elaine Wolff will be leading a session on teaching disciples with special needs. There will be other sessions geared specifically toward adults, youth and children. The training is planned for February 7, 2010 at Jacksonville First UMC. Please contact Donna Hankins-Hull to RSVP at [dthankins@fumclr.org](mailto:dthankins@fumclr.org) or (501)372-2256.



In this new year, we invite you to play an active role in our Ministry of Music if you are not doing so already. From choirs for adults, children and youth to the 723 Band and the Sanctuary Bells, I am certain that you will have a comfortable and fun place to share your gifts with our church and beyond.

Please give me a call at 372-2256 to get involved...or you can e-mail me at [jpeterson@fumclr.org](mailto:jpeterson@fumclr.org). I look forward to hearing from you!

Peace to you in 2010,  
Jon C. Peterson  
Director of Music Ministries

### 2010 Rethinking Gifts Campaign Report

Thank you, First Church for those of you that have already participated in the 2010 Rethinking Gifts Campaign by turning in your 2010 Gift Plan card and Rethinking Commitment card! **To date, a total of 271 Gift Plan Cards have been returned totaling \$1,101,651. This amount represents 83% of the amount needed to fund our 2010 contribution budget. How does this compare to the same time last year? Nearly a year ago, some 282 cards had been returned totaling \$1,117,427 which represented 82% of the amount needed to fund the 2009 contribution budget.**

So, you can see that we still need your help!!! Because we still had not heard from some of our regular givers, the Finance Committee did not approve a 2010 operating budget and will be meeting again January 20 to review the results of the 2010 Gift Plan campaign.

If you have not yet turned in your 2010 yellow Gift Plan Card and white Rethinking Commitment Card, please do so as soon as possible. You may mail both cards to the church office or place them in the offering plate. If you have lost your cards and would like others, please call Monica or Kassandra at the church office (372-2256) and they'll be happy to help you.

Please send church calendar items to **Monica Whitfield** at [mwhitfield@fumclr.org](mailto:mwhitfield@fumclr.org) or contact her by phone **372-2256**.



### Survey To Help Define Main Street Revitalization

A Main Street Survey has been released by a group working as a subcommittee of a new Main Street Revitalization Task Force headed by the Downtown Little Rock Partnership (DLRP). First Church members have an opportunity to participate in the survey; defining the next phase of downtown revitalization. The survey can be accessed online before February 1 by going to: [www.surveymonkey.com/s/DLRP-MainStreet](http://www.surveymonkey.com/s/DLRP-MainStreet). There is a link to the survey on the News page of our church website, [www.fumclr.org](http://www.fumclr.org).

Church Website: [fumclr.org](http://fumclr.org)

## Families of First Church

### In Memory

Carolyn Mabry  
Joined First Church 4/17/1988  
Joined Church Triumphant 1/10/2010

Geraldine Patton Jones  
Joined First Church 9/13/1953  
Joined Church Triumphant 1/11/2010

### Members in the Hospital

Mac McClellan (St. Vincent)  
Frances Trimble (AR Hospice)

### Sympathy

Christian sympathies are extended to: the family of **Carolyn Mabry** who died January 10; **Cindy Childers and Mona McClelland** and family in the death of Cindy's father, James Childers, on January 11; and to **Custis (C.L.) Jones** and family in the death of his wife Geraldine (Gerry) Jones on January 11.

### U.M.W. Presents Mission Speakers Two separate dates to learn about being in mission with Women, Children and Youth.

The Rev. Meri Whitaker will deliver a sermon at all three worship services on January 31, 2010. A missionary with the General Board of Global Mission and a Church and Community Worker, Rev. Whitaker is Director of Cookson Hills Mission Center in eastern Oklahoma. She brings an inspired, powerful message about service and hope for the Cherokee Indians and others at the Cookson Hills Mission Center. FUMC participated in the Volunteer In Mission [VIM] program to Cookson Hills some years ago.

On February 7, 2010 following the First Tradition worship service a Mardi Gras luncheon will be served. Maggie Beeler of Methodist Family Health will explain the organizations under the METHODIST FAMILY HEALTH umbrella. Some of you already know that a very long time ago, an orphanage was built in Arkansas with a single mission: to provide the best possible care to children who needed help. More than 100 years later, that mission remains the same-but the little orphanage has been transformed into a statewide behavioral healthcare program for children, women and families. Every day, Methodist Family Health provides behavioral, emotional, and spiritual support to more than 1,000 individuals under their expert care in approximately 20 Arkansas cities from counseling to hospitalization and the many steps in between. You are invited to come and learn how Methodist Family Health is uniquely equipped to care for those who need a helping hand. Please make your reservation for lunch by calling the church office or completing the card in the bulletin on Sunday, January 31. A donation will be appreciated to cover the cost of the lunch. Everyone is welcome!

## More News

### Faulkner Circle

The Faulkner Circle will meet on Monday, January 25, 2010, at 7 p.m. at the home of Kathy Blackmon. Darlene Scheibner is the co-hostess and Nancy Oldham will continue the mission study on Sudan.



### Adventures in Learning Winter 2010

Wednesdays and Thursdays: January 20 – March 11  
Registration Fee: \$35

#### Classes include:

Behind the Headlines, Biblical Themes, Techno-Babble, Travelogue, Romanov Dynasty, Spanish, Geology of Arkansas, Sports Talk, Book Club, Yoga & Meditation, Tai Chi, Bridge, Mah Jongg & Scrabble and much more!

For more information, please call the LifeQuest office at 501-225-6073 or visit our web site at [www.lifequestofarkansas.org](http://www.lifequestofarkansas.org)

### FUMC Library Book Sale

Sunday Mornings  
January 17 & 24



### Green Tip of the Week

**Green your computer!** If every U.S. computer and monitor were turned off at night, we could shut down eight large power stations and avoid emitting 7 million tons of CO2 every year. Enable your energy efficiency settings by opening the Control Panel and clicking on "Power Options." Use the "low power mode," "sleep mode," "hibernate," or "standby."